



## 灌溉設備專用減速機

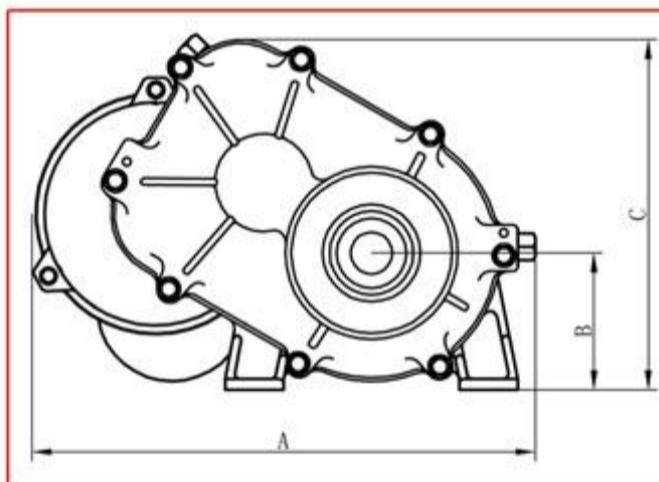
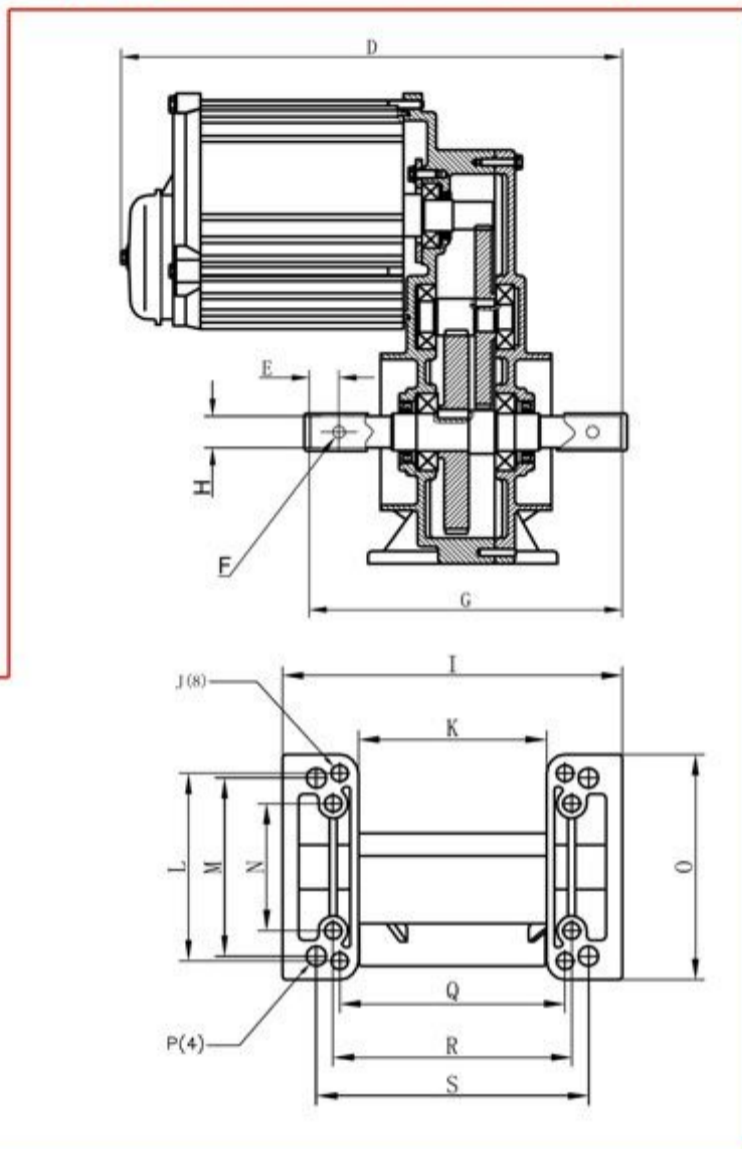


**GELUFU** 保定格魯夫商貿有限公司

## 中央驅動減速電機

## Helical Center Drive Gearmotors

## 安裝圖 Dimensional Drawing



## 安裝尺寸 Installation Dimension

L series motor performance data												
STYLE	HP	MOTOR RPM			DRIVE RATIO	GEARBOX OUTPUT SHAFT RPM			GEARBOX OUTPUT SHAFT TORQUE			WEIGHT (kg/lbs)
		(460V)	(415V)	(380V)		(460V)	(415V)	(380V)	(460V)	(415V)	(380V)	
L75-34	0.75	1720	1420	1420	50:1	34	28	28	157.3 Nm	172.3 Nm	157.8 Nm	25.0/55
L75-43	0.75	1720	1420	1420	40:1	43	35	35	124.4 Nm	137.8 Nm	126.2 Nm	25.0/55
L10-34	1.00	1720	1420	1420	50:1	34	28	28	210.6 Nm	229.5 Nm	210.2 Nm	28.0/62
L15-34	1.50	1720	1420	1420	50:1	34	28	28	314.6 Nm	344.6 Nm	315.5 Nm	27.7/61
L15-43	1.50	1720	1420	1420	40:1	43	35	35	248.7 Nm	275.7 Nm	252.4 Nm	27.7/61
L15-57	1.50	1720	1420	1420	30:1	57	47	47	187.6 Nm	205.3 Nm	188.0 Nm	25.0/55
L15-68	1.50	3440	2840	2840	50:1	68	57	57	157.3 Nm	169.3 Nm	155.0 Nm	26.8/59
L15-86	1.50	3440	2840	2840	40:1	86	71	71	124.4 Nm	135.9 Nm	124.4 Nm	26.8/59

## 技術參數 Performance Date

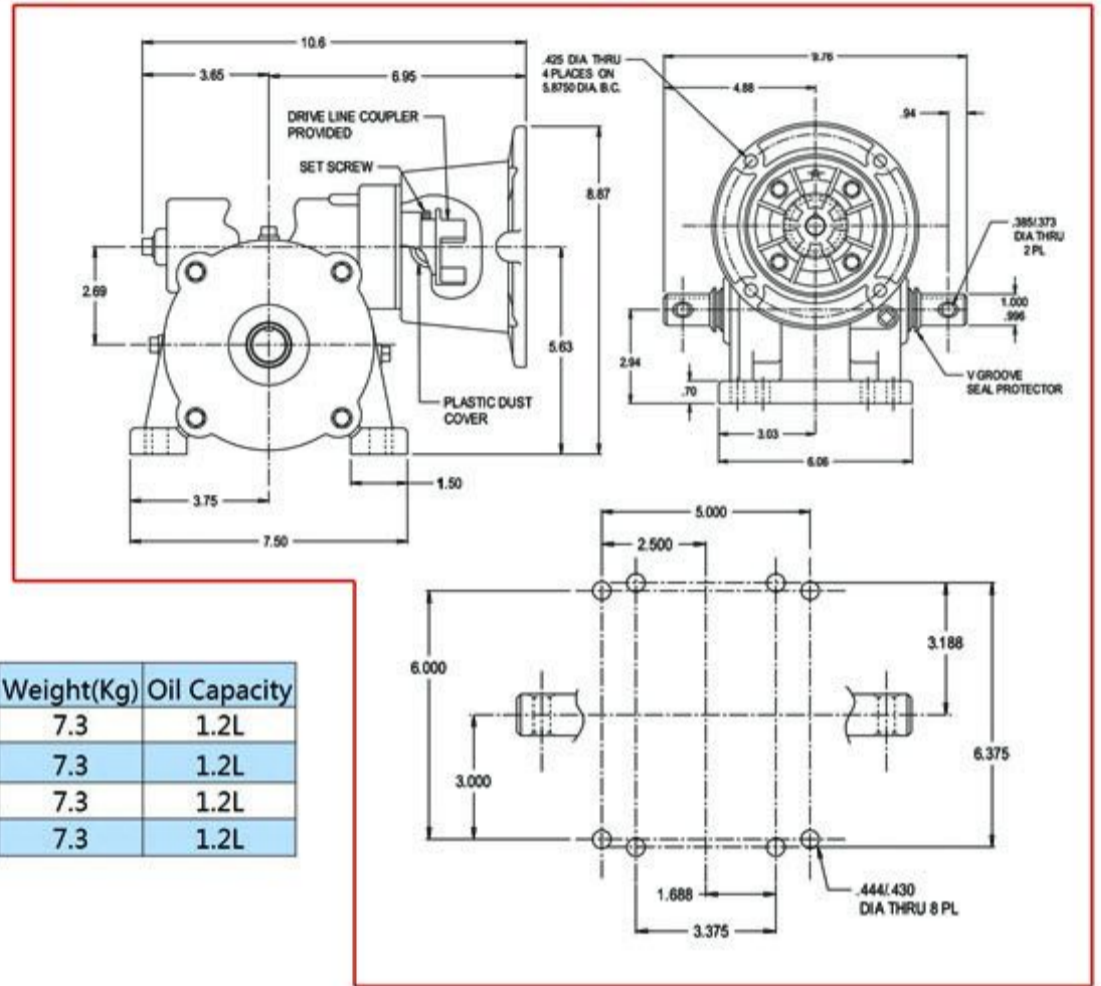
Installation Size Performance Data																			
STYLE	A	B	C	D	E	F	G	H	I	J	K	L	M	N	O	P	Q	R	S
L75-34	14.37	3.850	9.91	15.63	0.937	0.377	9.882	1.00	9.06	0.453	5.02	5.000	4.750	3.386	5.984	0.531	6.000	6.358	7.25
L75-43	14.37	3.850	9.91	15.63	0.937	0.377	9.882	1.00	9.06	0.453	5.02	5.000	4.750	3.386	5.984	0.531	6.000	6.358	7.25
L10-34	13.70	3.882	9.91	18.48	0.941	0.382	9.803	1.00	8.35	0.433	4.960	5.000		3.429	5.827		6.000	6.380	
L15-34	14.37	3.850	9.91	16.42	0.937	0.377	9.882	1.00	9.06	0.453	5.02	5.000	4.750	3.386	5.984	0.531	6.000	6.358	7.25
L15-43	14.37	3.850	9.91	16.42	0.937	0.377	9.882	1.00	9.06	0.453	5.02	5.000	4.750	3.386	5.984	0.531	6.000	6.358	7.25
L15-57	14.37	3.850	9.91	16.42	0.937	0.377	9.882	1.00	9.06	0.453	5.02	5.000	4.750	3.386	5.984	0.531	6.000	6.358	7.25
L15-68	14.37	3.850	9.91	15.63	0.937	0.377	9.882	1.00	9.06	0.453	5.02	5.000	4.750	3.386	5.984	0.531	6.000	6.358	7.25
L15-86	14.37	3.850	9.91	15.63	0.937	0.377	9.882	1.00	9.06	0.453	5.02	5.000	4.750	3.386	5.984	0.531	6.000	6.358	7.25

## 中央蝸輪驅動減速機

### Worm Gear Center Drive



### 安裝圖 Dimensional Drawing



### 技術參數 Performance Date

Model	Ratio	Output Speed	Center Distance	Weight(Kg)	Oil Capacity
LUMC-1-30	30	58	2.69"	7.3	1.2L
LUMC-1-40	40	43	2.69"	7.3	1.2L
LUMC-1-50	50	35	2.69"	7.3	1.2L
LUMC-1-60	60	29	2.69"	7.3	1.2L

## 傳動軸聯動器

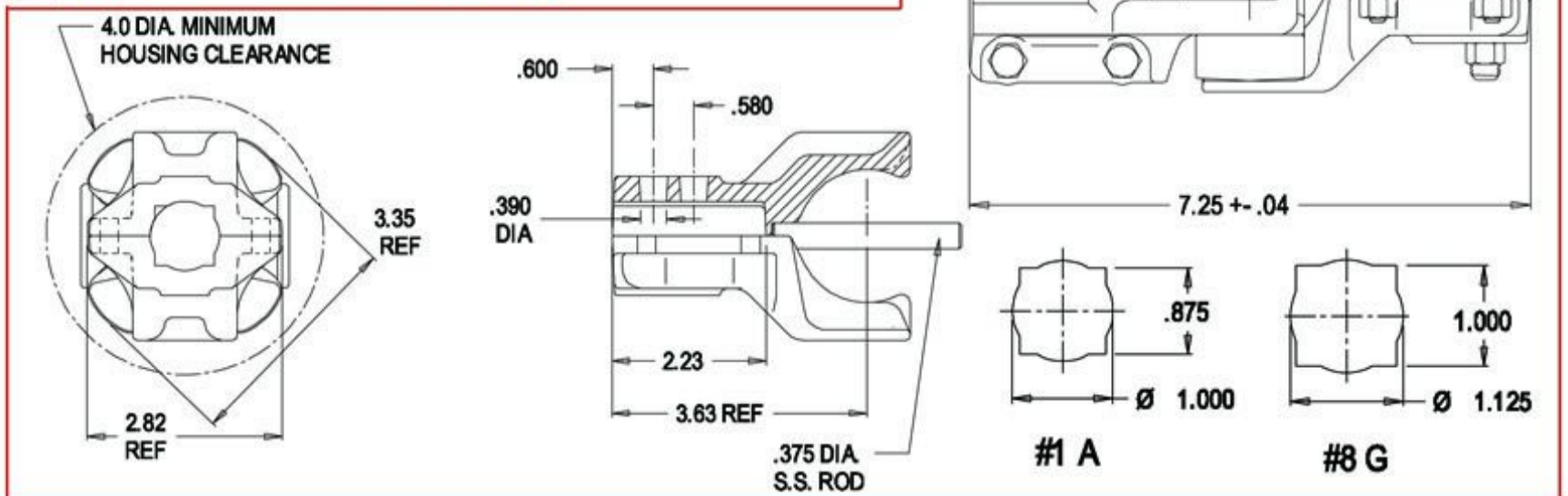
### Drive Line Coupler



### 技術參數 Performance Date

Model	Assy Description
LUMCL-011-I	1.125"R&1" x2Ends
LUMCL-011-G	1"R&8"Sq x1.125"R&1"Sq
LUMCL-011-M	1"R&7/8"Sq Tow x 2Ends

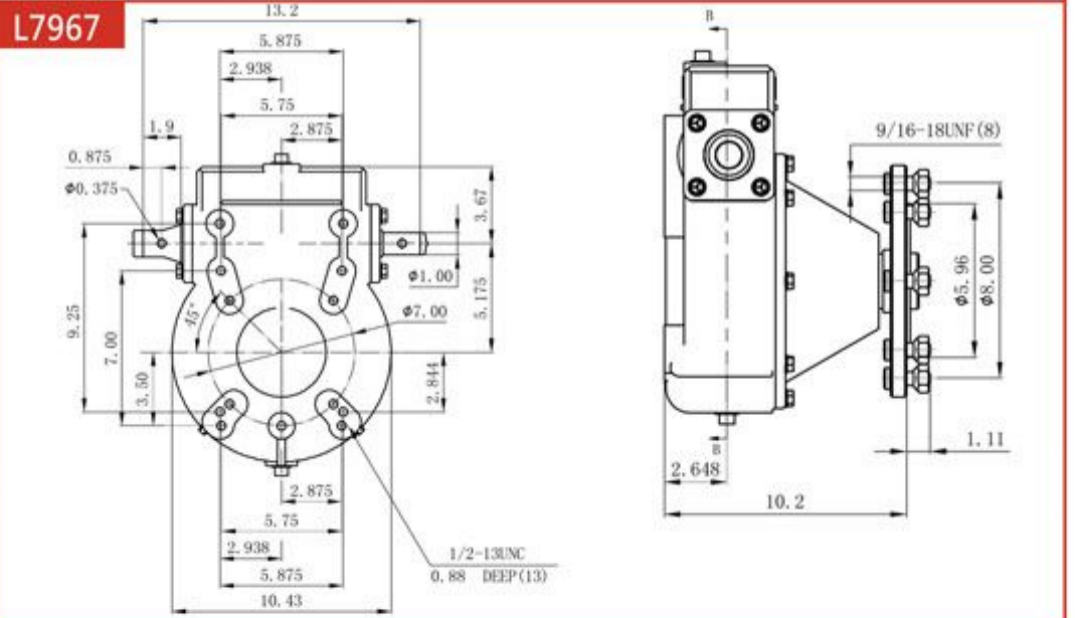
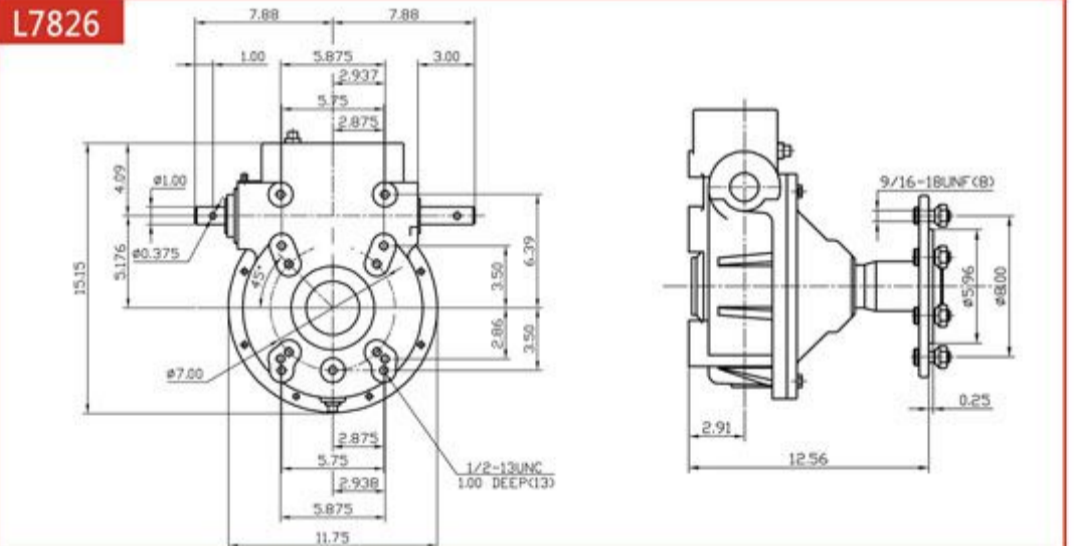
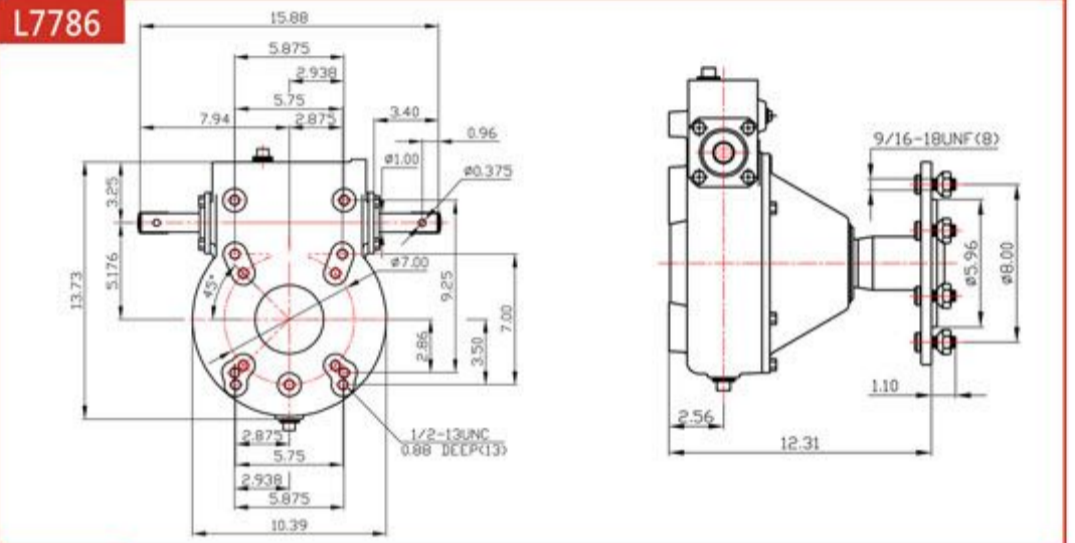
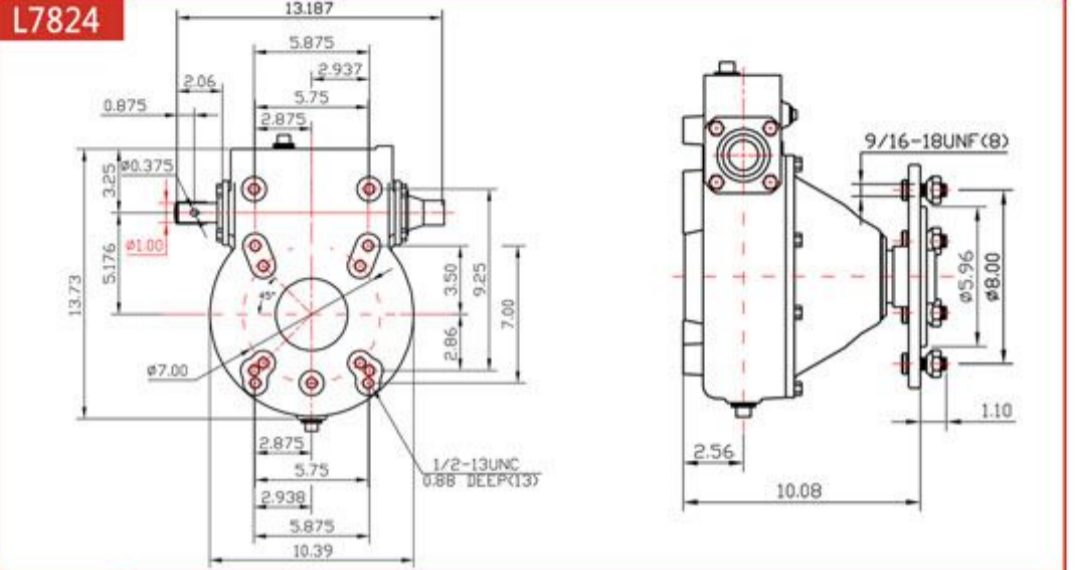
### 安裝圖 Dimensional Drawing



## 行走車輪驅動減速機 Wheel Drive Gearbox



## 安裝圖 Dimensional Drawing



## 技術參數 Performance Data

Model	Ratio	Shaft Size	Kg	Torque
L7824	50:1	2.25"	50	7909Nm
L7786	52:1	2.25"	53	7909Nm
L7967	50:1	2.25"	55	7909Nm
L7826	52:1	2.25"	60	7909Nm

# 保定格魯夫商貿有限公司

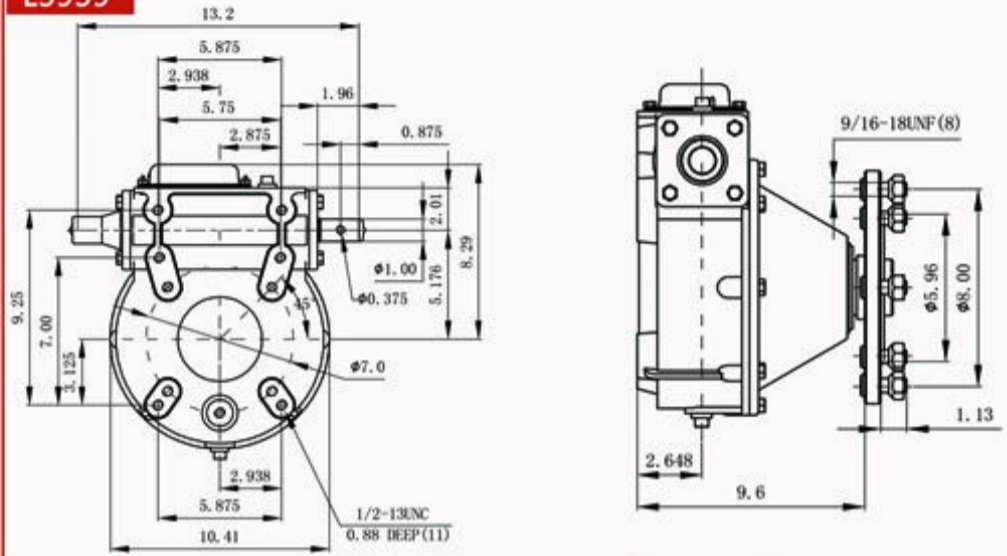
## 行走車輪驅動減速機

## Wheel Drive Gearbox

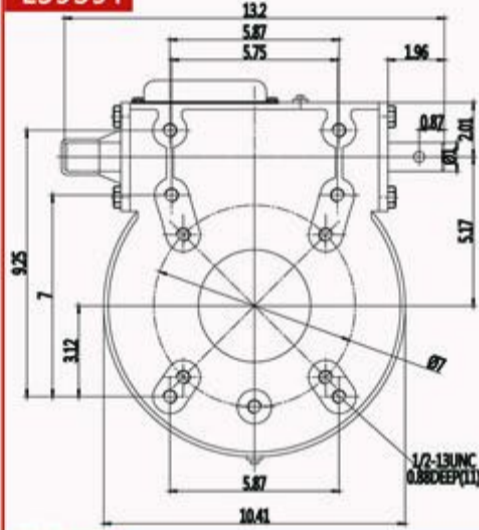


## 安裝圖 Dimensional Drawing

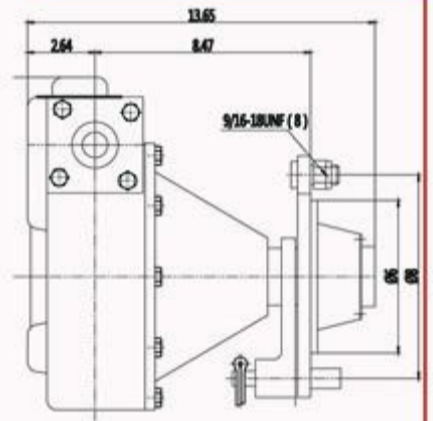
L3939



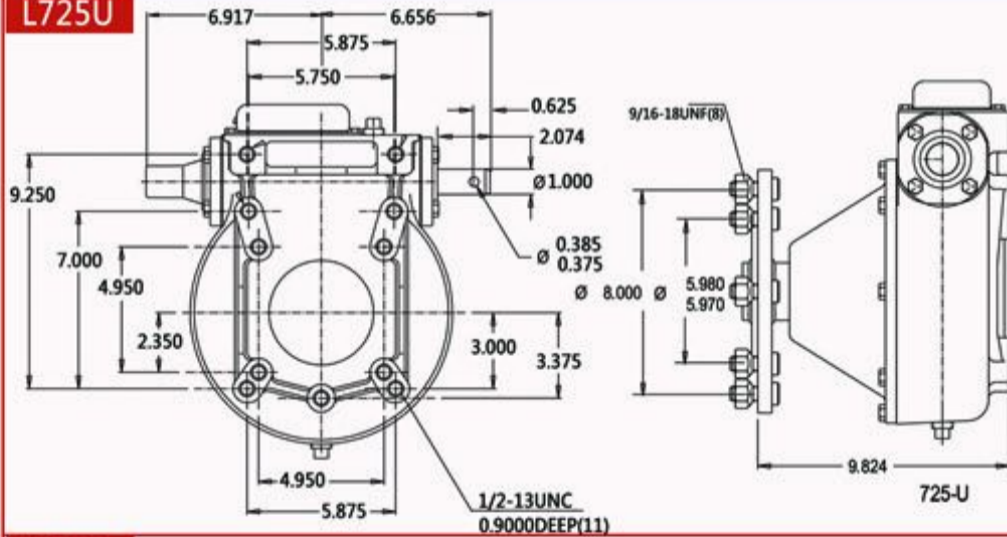
L3939T



Towable Wheel Gearbox



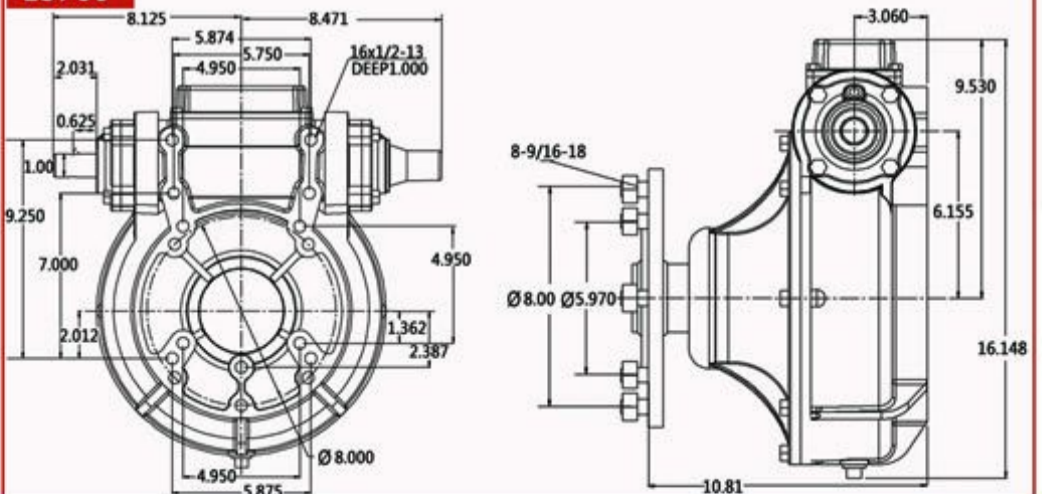
L725U



## 技術參數 Performance Date

Model	Ratio	Shaft Size	Kg	Torque
L7939	50:1	2.25"	53	7909Nm
L7939T	50:1	2.25"	60	7909Nm
L725U	50:1	2.25"	50	7909Nm
L8760	50:1	2.20"	79	10170Nm

L8760

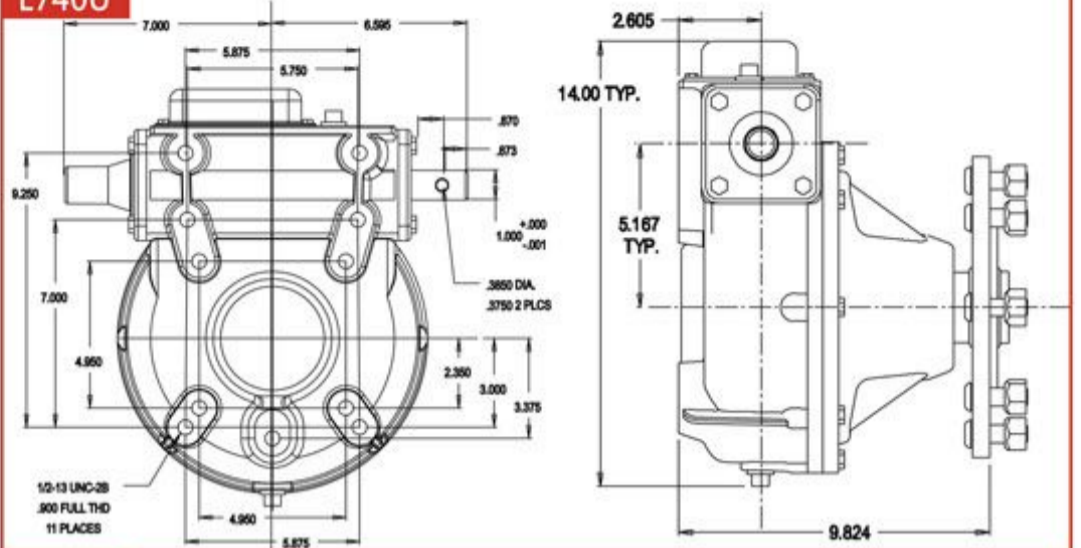


## 行走車輪驅動減速機 Wheel Drive Gearbox

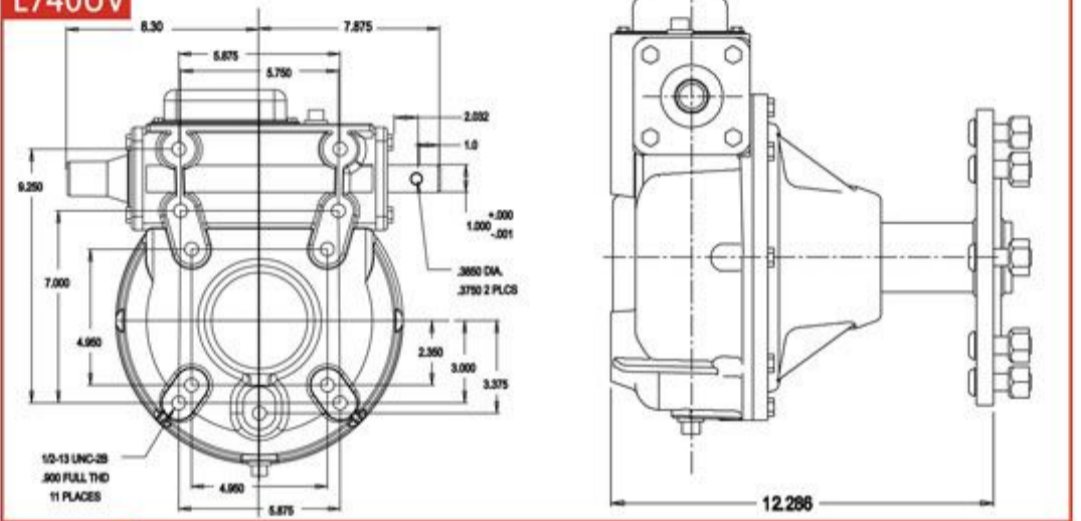


## 安裝圖 Dimensional Drawing

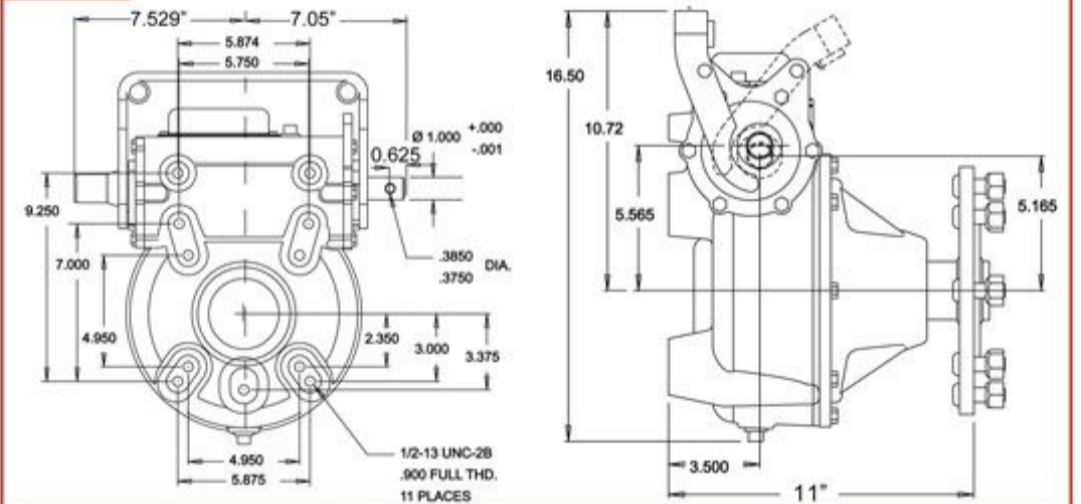
L740U



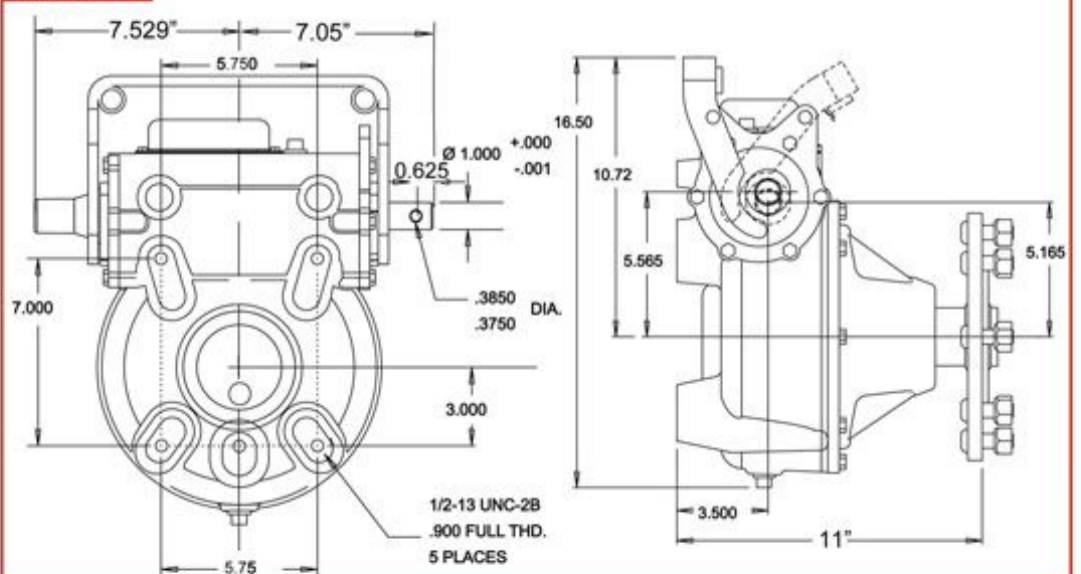
L740UV



TNT2-U



TNT2-UV



## 技術參數 Performance Date

Model	Ratio	Shaft Size	Kg	Torque
L740U	50:1	2.25"	51	7909Nm
L740UV	52:1	2.25"	54	7909Nm
TNT2-U	50:1	2.25"	55	7909Nm
TNT2-UV	52:1	2.25"	57	10170Nm

# 保定格魯夫商貿有限公司

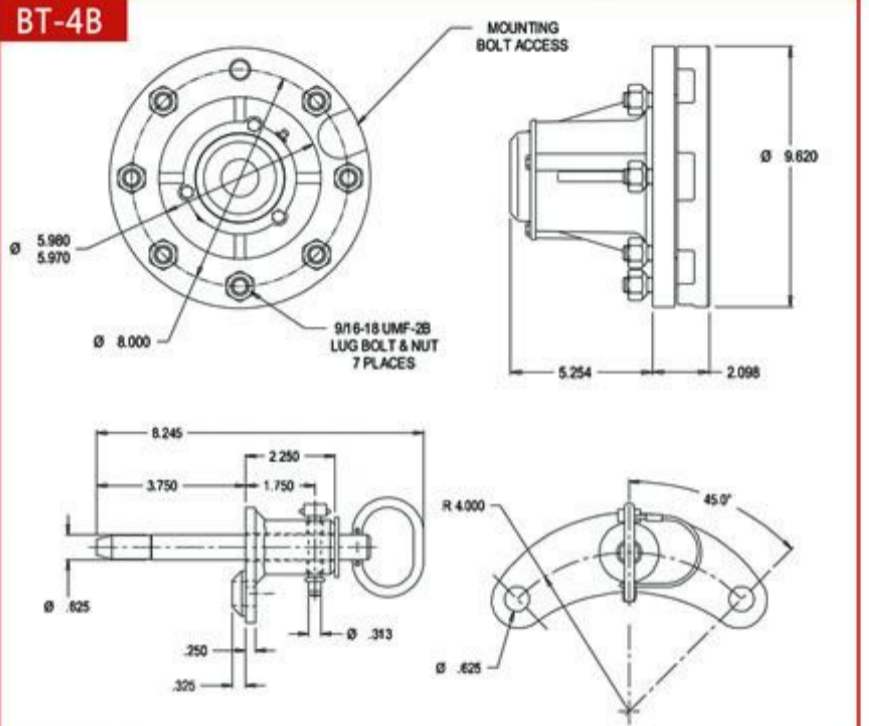
## 其他輔助配件

### Other Auxiliary Parts

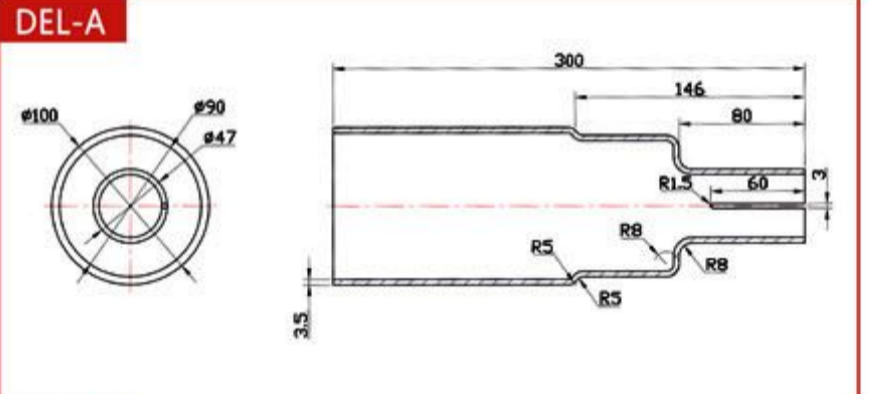
#### 拖移裝置 Towable Conversion Kits



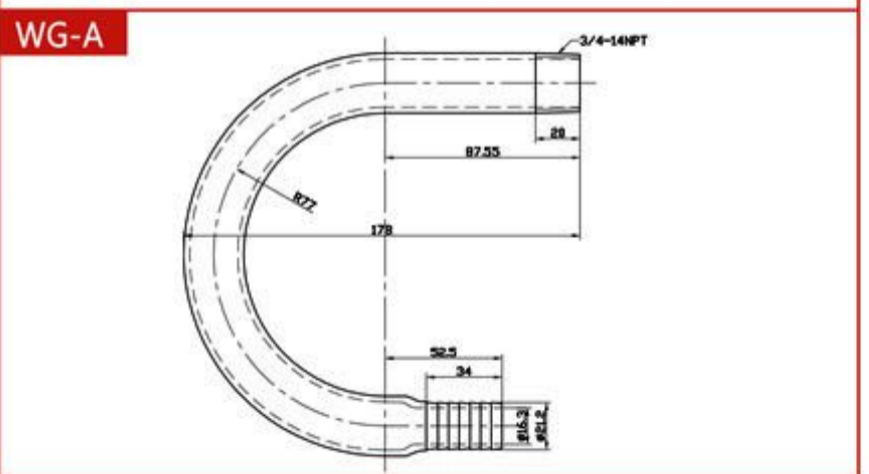
#### 安裝圖 Dimensional Drawing



#### 聯軸器護套及傳動軸護套 Drive Line Coupling Endbell & Drive Shaft Shields



#### 噴灌機噴頭彎管 Pivot Drop Elbow



#### 噴灌機輪胎 Pivot Tires



規格 Specification	中心孔尺寸 Central Hole Dimension	螺孔尺寸 Nut Hole Dimension	分度圓直徑 Chart Diameter	偏距 Deviating Distance	配套輪胎 Accessional Tire
W10 x 24	152.4	8-ø16.7	203.2	-50.8	11.2-24
W12 x 24	152.4	8-ø16.7	203.2	0	14.8-24
w10 x 38	152.4	8-ø16.7	203.2	-44	11.2-38



# 保定格魯夫商貿有限公司



地址 (ADD) : 河北•保定

電話 (TEL) : +86-312-6784766

傳真 (FAX) : +86-312-6784733

<http://www.gelufu.com>

E-mail: [china@gelufu.com](mailto:china@gelufu.com)

